

BATH AND NORTH EAST SOMERSET

ECONOMIC AND COMMUNITY DEVELOPMENT POLICY DEVELOPMENT AND SCRUTINY PANEL

Thursday, 28th November, 2013

Present:- Councillors Robin Moss (Chair), Cherry Beath (Vice-Chair), Patrick Anketell-Jones, Brian Simmons, Geoff Ward, Dave Laming, David Martin and Ian Gilchrist

37 WELCOME AND INTRODUCTIONS

The Chairman welcomed everyone to the meeting.

38 EMERGENCY EVACUATION PROCEDURE

The Democratic Services Officer drew attention to the emergency evacuation procedure.

39 APOLOGIES FOR ABSENCE AND SUBSTITUTIONS

Councillor Andrew Furse had sent his apologies to the Panel. Councillor Ian Gilchrist was substitute for Councillor Furse.

40 DECLARATIONS OF INTEREST

There were none.

41 TO ANNOUNCE ANY URGENT BUSINESS AGREED BY THE CHAIRMAN

There was none.

42 ITEMS FROM THE PUBLIC OR COUNCILLORS - TO RECEIVE DEPUTATIONS, STATEMENTS, PETITIONS OR QUESTIONS RELATING TO THE BUSINESS OF THIS MEETING

The Chairman informed the meeting that David Redgewell will give his statement before item 9 on the agenda (Community Safety Plan: British Transport Police) and Susan Charles will give her statement before item 10 on the agenda (Leisure Strategy update).

43 MINUTES

The Panel confirmed the minutes of the previous meeting as a true record and they were duly signed by the Chairman.

44 CABINET MEMBER UPDATE (10 MINUTES)

The Chairman invited Councillor Ben Stevens (Cabinet Member for Sustainable Development) to introduce his update to the Panel (attached as Appendix 1 to the minutes).

The Panel made the following points:

Councillor Stevens confirmed that he had received a scoping study, by the River Regeneration Trust, which identified economic development opportunities in the Broadmead Peninsula. Councillor Stevens informed the meeting that he had only just received the study, so he had had no time to read the full report, though he was impressed with the executive summary of the report.

Councillor Beath asked about the status of the Assembly Rooms and the National Trust's intentions considering that they were thinking to set short lease contracts.

Councillor Stevens replied that there is a relatively short lease in comparison to some other leases that the Council deals with. Councillor Stevens said that he didn't know the exact intentions of the National Trust.

Councillor Anketell-Jones said that, according to his understanding, the economic area master plan was going to be brought to public consultation through the Placemaking process. Councillor Anketell-Jones asked if the master plan is still going ahead considering that the Placemaking process had been held up.

Councillor Stevens replied that the Council will continue with the master plan as planned but the public consultation is still considered around the Placemaking process. It does slightly delay the delivery of the economic area master plan.

The Chairman thanked Councillor Stevens for an update.

45 COMMUNITY SAFETY PLAN: BRITISH TRANSPORT POLICE (30 MINUTES)

The Chairman invited David Redgewell to address the Panel with his statement in advance of the presentation on the British Transport Police (BTP).

David Redgewell raised three points in his statement.

- The on-going issues with the Anti-Social Behaviour at the Oldfield Park Station, in particular on the graffiti problems and spray on the network rail property. The introduction of the community safety cameras is one of the ways forward to resolve these issues, something that could also be introduced on some other smaller train stations in the area.
- 'Access for all' initiative – hope to secure some money from the Western Riverside project towards Oldfield Park station.

- A plea for more BTP officers in the area, in particular for the North Somerset line.

The Chairman invited Chief Inspector Paul Richards (BTP's Sector Commander for the South West) to give his presentation to the Panel.

Chief Inspector Richards highlighted the following points in his presentation:

- BTP history
- Rail crime history
- 7/7 London bombings of 2005
- 2012 Olympics in London
- About the BTP
- Aims
- Local BTP Neighbourhood Policing team
- Local area
- How are BTP doing – statistics
- Leaflets, social media, information for the public, new text number and other ways to contact the BTP
- Trespass and Cable Theft
- Anti-Social Behaviour Order – ASBO
- Work with Samaritans and other organisations/partners

A full copy of the presentation is available as Appendix 2 to these minutes.

The Panel made the following points:

The Chairman said it is good to see that robbery is down 80% and that route crime is down 71% and asked how that matches with metal thefts.

Chief Inspector Richards responded that route crime includes a tremendous amount of other issues such as trespass, obstructions, etc. and has a much wider remit than cable theft.

The Chairman asked how we compare with other countries; number of officers in Bath; and if the BTP got involved in the Alcohol Harm review.

Chief Inspector Richards responded that he was not sure if there were any comparisons with other countries. The reason for that is, for example, some countries have different laws/views on trespassing. Chief Inspector Richards also said that there are two officers and six community support officers present in Bath – this was allocated in conjunction with First Great Western. Chief Inspector Richards concluded by saying that the BTP would get involved in the Alcohol Harm review via Avon and Somerset Police.

The Panel asked about the work in relation to stopping the graffiti along the railway lines.

Chief Inspector Richards responded that the BTP works closely with Network Rail who have their Community Safety Manager picking up on these particular issues. Chief Inspector Richards said that often these offences are very difficult to detect and asked everyone who witness these offences to report them to the BTP or Network Rail.

Chief Inspector Richards also invited everyone to attend the next BTP PACT meeting at the Royal Hotel, Bath, on 10th December at 10:30am and communicate any issues, local or wider, to the officers.

The Panel asked how many officers are in each area.

Chief Inspector Richards responded that his area was going through restructuring at the moment though he was hoping to get additional staff as an investment in Swindon. This is significant because of the way the South West network is set up. There is a significant number of staff in Bristol and some staff in Bath and Chief Inspector Richards was hoping to get a sergeant and up to eight officers which should co-ordinate the BTP response more effectively.

The Panel asked about the work between the BTP and other organisations in order to prevent suicides.

Chief Inspector Richards responded that it is exceptionally difficult to deal with these tragic events. It is about balancing the needs of the family of the deceased whilst minimising disruption to the rail network. Chief Inspector Richards said that this is also about educating officers to work together with the Samaritans on dealing with these sensitive issues.

The Panel asked how many offences are from repeat offenders.

Chief Inspector Richards responded that he had no figures in front of him though he would not think it was a tremendous amount of repeat offenders according to the statistics in the presentation.

The Panel asked if travelling without a ticket was a crime and, if so, whether it was included in the BTP statistics.

Chief Inspector Richards responded that ticketless travel is not the same offence like theft etc. If someone travelled without a valid ticket and could not give a valid reason why they did that then it could be prosecuted and it would be part of crime statistics.

The Panel asked about the target response time.

Chief Inspector Richards responded that the BTP does have response time.

It was **RESOLVED** to:

1. Note the Community Safety Partnership work with BTP, First Great Western and Network Rail.

2. Note future challenges on our local rail stations, to include Keynsham and Oldfield Park.
3. Welcome the presentation by Chief Inspector Paul Richards; and
4. Note that the next BTP PACT meeting is on 10th December 2013 at 10:30am in the Royal Hotel, Bath.

46 LEISURE STRATEGY UPDATE (45 MINUTES)

The Chairman invited Susan Charles to read out her statement, and also statements from Jenny Shrubsall and Joyce Stock.

Susan Charles expressed her concerns (quote) 'about the lack of specified disabled parking for users of the Keynsham Leisure Centre, which was removed in 2007 and with no suitable alternative being offered' (quote finished).

All three statements are attached as Appendix 3 to these minutes.

Councillor Brian Simons (Keynsham North Ward Councillor and Member of the Panel) said that he will discuss the issue over disabled access at Keynsham Leisure Centre with Ms Charles and the relevant Council officers outside the meeting.

Members of the Panel debated the issues raised in the statements.

Councillor Geoff Ward said that he will, as Shadow Cabinet Member, speak to Matthew Smith (Divisional Director for Environmental Services) on this matter.

The Chairman also asked that the statements are sent to the appropriate Cabinet Member/s. The Chairman also said that the Panel does not have any decision making powers like Cabinet Member/s have but that the Panel will expect prompt replies from the relevant Cabinet Member/s and officers on this matter for the next meeting.

It was **RESOLVED** to send the statement to the relevant Cabinet Member/s and to receive replies on this matter at the next meeting of the Panel.

The Chairman invited Marc Higgins (Business Development Manager from Sport and Active Lifestyle Team) to give the presentation.

Marc Higgins highlighted the following points in his presentation:

- Vision for discussion
- Health and Wellbeing Strategy
- Health and Wellbeing Initial Consultation
- Health and Wellbeing – Emerging Priorities
- The Strategy

- Facilities
- Initial conclusions
- Opportunities
- Feasibility
- Procurement
- Next steps

A full copy of the presentation is attached as Appendix 4 to these minutes.

The Panel made the following points:

The Panel asked if the report needed to be more complete and overarching so the procurement process fit in the strategy. The Panel also asked what is the cross-border use of the facilities in B&NES and what opportunities exist to engage people from outside B&NES to use facilities.

Marc Higgins showed a diagram (Appendix 5 to these minutes) to the Panel on how the strategy will fit together in terms of the other strategies, budget, and procurement process. Marc Higgins also said that cross-border issue is not so strong in Bath whilst a bit better in Keynsham. The Council will look into redevelopment of Keynsham facilities to bring even more customers from outside B&NES.

The Panel asked how the Council set its 25 year delivery programme.

Marc Higgins replied that the 25 year delivery programme was based on housing projection number for the area, trying to set in parallel with the Core Strategy.

The Panel asked about the work with other organisations and venues (i.e. Bath University, Lambridge training ground, etc.) and also about the issue of heated swimming pools in Keynsham.

Marc Higgins replied that the Council has a very good working relationship with organisations such as Bath University. The issue of heated swimming pools is part of the consultation process for January 2014.

The Panel commented that young people are quite keen to get into sports centres but they could not afford the monthly cost of it.

Marc Higgins replied that discussion with young people will be part of the consultation.

The Panel also said that the Council should also get in touch with Curo.

It was **RESOLVED** to note the report and presentation and receive draft strategy at one of the future meetings.

47 DRAFT MEDIUM TERM PLAN (PLACE) UPDATE

The Chairman invited Louise Fradd (Strategic Director for Place) to introduce the report.

Louise Fradd introduced the report by saying that this is the second year of a three year plan. Page 32 of the agenda had some of the key issues addressed in the directorate.

Members of the Panel confirmed that they had all received an updated version of page 35 of the report (as amended and published on the Council's website).

The Panel asked about the latest on the Victoria Art gallery.

Louise Fradd responded that the Council is constantly reviewing this matter, though at the moment, the gallery was not doing that badly and hopefully it will continue to do well.

Louise Fradd also informed the Panel that the Divisional Directors interviews will happen before this Christmas.

The Panel asked about linkage between planning, building control, highways and environmental services together with the economic development drivers and the ability for the Council to create money.

Louise Fradd responded that she will be holding a workshop with the managers from her directorate, and one of the key aspects of that workshop will be what are the income drivers and what is it that the directorate needs to do to fit in the new environment (Enterprise Area, City Deal, West of England, etc.). The aim of the workshop will be to make everyone think about their budgets and how to work together. Louise Fradd also pointed out that services are working with each other from other directorates.

Some Members of the Panel asked Louise Fradd if she would commit not to close the Victoria Art gallery.

Louise Fradd responded she could not answer that comment though she will do everything to deliver the targets.

Councillor Stevens added that the Council is working quite close with the gallery to ensure that their footfall is maintained and that the Council will continue to work with the gallery to make sure that they are looked after.

The Panel asked Louise Fradd how confident she was that there could be further efficiency savings.

Louise Fradd replied that her priority is to meet statutory requirements in service provision. It is also all about officers thinking around wider picture, thinking more imaginatively on what the Council does and whether it can be done in other, more visionary ways. For example, the Council is now charging pre-planning application and that works quite well.

The Chairman summed up the debate by saying that the whole issue is about generating money ourselves if we don't have as much money to spend, and looking at ways we can bring in other sources of funding.

Discussions last year were if the cuts from last year were sustainable and whether or not entrance charging, for example in Victoria Art gallery, would generate income and increase footfall. Last year's discussions also looked at the possibility of some capital investment to increase the amount of income that is generated through the shop, such as a coffee shop, at the gallery.

The Chairman also pointed out that there is external funding that is not accessible by Local Authorities and what reference was made to 3rd/voluntary sector working in partnership with Local Authorities.

Louise Fradd reminded the Panel that this is just an update on where the directorate are with the budget this year. Louise Fradd also said that the next year, and specifically the year after that, will be very difficult years.

The Chairman closed the debate by saying that the recommendations 2.2 and 2.3 of the report could not be supported by the Panel. Those issues will be discussed at the Full Council meeting in February 2014 (Budget meeting).

It was **RESOLVED** to note the report.

48 WORKPLAN

It was **RESOLVED** to note the current workplan.

The meeting ended at 3.20 pm

Chair(person)

Date Confirmed and Signed

Prepared by Democratic Services

Economic Development and Regeneration

- A new **business support contract** has been awarded and is now delivering start up courses for people across the District. In a field of strong candidates, the contract was awarded to Cool Ventures
- The **Economic Strategy** refresh process has started. We will be presenting to the Scrutiny Panel on this in the New Year
- On **broadband**, BT will begin their survey work as part of the BDUK project in Spring next year in some of our rural communities. We are pleased to have been able to support some parishes (e.g. Claverton) with their aspirations to put a new cabinet into their village and broker conversations with BT
- Through the Keynsham Development Advisory Group (KDAG) we are pleased to have been able to begin discussions about the works on the **High Street in Keynsham**. We continue to work with Taylor Wimpey on the employment space at Somerdale
- We continue to work with the LEP on the development of its **Strategic Economic Plan**, which will allow us to access our share of a £50m single pot which Government is putting forward through the West of England LEP to support economic growth. We are also working with them on the development and delivery of a new Single pot for EU funding which will also be delivered through the LEPs from 2015
- The **Enterprise Area masterplan** work is proceeding with the team appointed and beginning to undertake the first element of the project, which is an update of the evidence base for the EA.
- We are about to publish a call for projects in **Radstock** against a £50k capital fund for community projects

Heritage Services

- **Bath Record Office grant:** £40,000 from the National Cataloguing Scheme for Archives to catalogue Council records going back to 1189
- **Fashion Museum grant:** £2,500 from The Prince's Foundation for Children and the Arts for DesignQuest at the Museum
- **Bath and the Great Western Railway** exhibition now open at the Victoria Art Gallery – features the important but rarely seen painting *The Railway Station* by William Powell Frith and 13 vintage Bath railway posters from the VAG collection
- **Use of social media:** a recent survey of the digital profile of the top 50 UK visitor attractions puts the Roman Baths 23rd on the list – between Hampton Court Palace and National Portrait Gallery – for its use of social media including Facebook, Twitter, YouTube, blogging and website
- **Customer Service Excellence:** the assessor has renewed Heritage Services' CSE status and awarded another 'compliance plus', giving the Service a total of 10 'compliance plus' (ie best practice) scores
- **China Welcome Charter:** the Roman Baths is one of a select number of businesses invited by Visit Britain to feature in its draft China Welcome Charter in support of Government initiatives to promote in-bound tourism from China
- **Beau Street Hoard:** Round 2 funding application now submitted to the Heritage Lottery Fund; the fund-raising appeal launched by the Chair of Council in July has reached £50,000 towards the target of £60,000
- **Temple Precinct:** now closed until Easter 2014 to put in a step-free walkway as part of ongoing 'Roman Baths Development' to improve accessibility and the visitor experience

- **Assembly Rooms:** the Council has signed a new 15-year lease with the National Trust
- **Learning Outside the Classroom:** the Fashion Museum and Roman Baths have renewed their Quality Badges with this Government-sponsored scheme
- **Twitter milestone** – the Fashion Museum has now exceeded its target of 3500 followers by the end of 2013
- **Forthcoming exhibition** – the Fashion Museum has secured the loan of three ensembles worn by Diana Princess of Wales and designed by David Sassoon, plus a collection of drawings of 70 additional designs for Diana, to be displayed in the Museum throughout 2014

Film Office and Arts

- **BBC's Children In Need and Points West** was broadcast live from Roman Baths on Friday 15th November. Bath was chosen as the opening location for the choir section of the show as it was considered to look the best of all the nationwide locations.
- **The Curse of the Midas Box**, the big feature that was filmed in Bath last year has just had its US release announced for January, so we are hoping to hear of the UK release date very soon. We hope to hold a local pre-release screening for internal colleagues and external stakeholders involved in the filming. Here's a link to its trailer:
http://www.imdb.com/title/tt1376213/?ref_=nm_film_act_3
- And we have just heard from Giles Foster, director of Unknown Heart, his most recent **Rosamunde Pilcher** drama adaptation, with top ratings on German TV, which shot in and around Bath this summer that he has secured a date for a local pre-release screening in January. The drama will be shown at Komedia Cinema on Sunday 19th January. Invitations will shortly be going out to Council colleagues and others connected to the filming.
- The LEP proposal for a **Shoot West Film Marketing Office**, with which Film Office has been involved since its early stages has now been approved and the first stage of its submission for funding has gone forward. This will also involve funding for improvements at the Bottle Yard film and tv studios in Henleaze.
- Film Office is also helping to set-up a new umbrella organisation **FO:UK (Film Offices: UK)**, a new England-wide association that will allow film offices to exchange best practice and to take part in joint ventures.
- **Hot off the press:** - Visit Britain are coming to film a promo in Bath this week because we've been voted No 1 Visitor destination on social media.

World Heritage Management

- **Great Spas of Europe**

The Council continues to keep an active interest in the 'Great Spas of Europe' project, led by the government of the Czech Republic. The project seeks to gain World Heritage status for an elite group of historic European spas, in order to recognise the contribution which spas have made to European and world culture. Whilst Bath is already a world heritage site, we want to be recognised as being within this elite group, primarily for tourism marketing purposes. In order to stay with the project and leave future options open, it was necessary for Bath to be included on the UK Tentative list of potential world heritage nominations. Competition for inclusion on the UK tentative list is extremely strong, and it is therefore tightly controlled by the UK Government.

We wrote to Minister Ed Vaizey, requesting his assistance in this matter, and worked closely with MP Don Foster and MEP Sir Graham Watson, who were both convinced of our case. We were delighted to receive a response from Minister Vaizey dated 24 October 2013 saying that it has been determined that it will be possible to include Bath on the current UK Tentative List.

The project is long-term and World Heritage recognition is by no means certain. However, the willingness of the UK Government to review their policy position and back Bath in this venture allows us to keep our rightful place at the top table of European Spas, and to continue to assess the benefits that staying with this project may bring.

- **World Heritage Site Management Plan**

The 2010-2016 World Heritage Site Management Plan is now at mid-term stage, and a progress report has recently been compiled for the Steering Group and for UNESCO. From a total of 71 actions in the plan, approximately half (48%) have already been achieved, with a further 39% underway. The most notable achievements have made by the World Heritage Enhancement Fund, which has turned £152, 000 of funding into over a £1m of work on the ground, across a total of 51 projects.

The recently appointed independent Steering Group Chairman, Peter Metcalfe, has undertaken a review of the workings of that group and is proposing a full report on World Heritage progress to the Council in Spring 2014.

This page is intentionally left blank

Economic Development and Regeneration

- A new **business support contract** has been awarded and is now delivering start up courses for people across the District. In a field of strong candidates, the contract was awarded to Cool Ventures
- The **Economic Strategy** refresh process has started. We will be presenting to the Scrutiny Panel on this in the New Year
- On **broadband**, BT will begin their survey work as part of the BDUK project in Spring next year in some of our rural communities. We are pleased to have been able to support some parishes (e.g. Claverton) with their aspirations to put a new cabinet into their village and broker conversations with BT
- Through the Keynsham Development Advisory Group (KDAG) we are pleased to have been able to begin discussions about the works on the **High Street in Keynsham**. We continue to work with Taylor Wimpey on the employment space at Somerdale
- We continue to work with the LEP on the development of its **Strategic Economic Plan**, which will allow us to access our share of a £50m single pot which Government is putting forward through the West of England LEP to support economic growth. We are also working with them on the development and delivery of a new Single pot for EU funding which will also be delivered through the LEPs from 2015
- The **Enterprise Area masterplan** work is proceeding with the team appointed and beginning to undertake the first element of the project, which is an update of the evidence base for the EA.
- We are about to publish a call for projects in **Radstock** against a £50k capital fund for community projects

Heritage Services

- **Bath Record Office grant:** £40,000 from the National Cataloguing Scheme for Archives to catalogue Council records going back to 1189
- **Fashion Museum grant:** £2,500 from The Prince's Foundation for Children and the Arts for DesignQuest at the Museum
- **Bath and the Great Western Railway** exhibition now open at the Victoria Art Gallery – features the important but rarely seen painting *The Railway Station* by William Powell Frith and 13 vintage Bath railway posters from the VAG collection
- **Use of social media:** a recent survey of the digital profile of the top 50 UK visitor attractions puts the Roman Baths 23rd on the list – between Hampton Court Palace and National Portrait Gallery – for its use of social media including Facebook, Twitter, YouTube, blogging and website
- **Customer Service Excellence:** the assessor has renewed Heritage Services' CSE status and awarded another 'compliance plus', giving the Service a total of 10 'compliance plus' (ie best practice) scores
- **China Welcome Charter:** the Roman Baths is one of a select number of businesses invited by Visit Britain to feature in its draft China Welcome Charter in support of Government initiatives to promote in-bound tourism from China
- **Beau Street Hoard:** Round 2 funding application now submitted to the Heritage Lottery Fund; the fund-raising appeal launched by the Chair of Council in July has reached £50,000 towards the target of £60,000
- **Temple Precinct:** now closed until Easter 2014 to put in a step-free walkway as part of ongoing 'Roman Baths Development' to improve accessibility and the visitor experience

- **Assembly Rooms:** the Council has signed a new 15-year lease with the National Trust
- **Learning Outside the Classroom:** the Fashion Museum and Roman Baths have renewed their Quality Badges with this Government-sponsored scheme
- **Twitter milestone** – the Fashion Museum has now exceeded its target of 3500 followers by the end of 2013
- **Forthcoming exhibition** – the Fashion Museum has secured the loan of three ensembles worn by Diana Princess of Wales and designed by David Sassoon, plus a collection of drawings of 70 additional designs for Diana, to be displayed in the Museum throughout 2014

Film Office and Arts

- **BBC's Children In Need and Points West** was broadcast live from Roman Baths on Friday 15th November. Bath was chosen as the opening location for the choir section of the show as it was considered to look the best of all the nationwide locations.
- **The Curse of the Midas Box**, the big feature that was filmed in Bath last year has just had its US release announced for January, so we are hoping to hear of the UK release date very soon. We hope to hold a local pre-release screening for internal colleagues and external stakeholders involved in the filming. Here's a link to its trailer:
http://www.imdb.com/title/tt1376213/?ref_=nm_film_act_3
- And we have just heard from Giles Foster, director of Unknown Heart, his most recent **Rosamunde Pilcher** drama adaptation, with top ratings on German TV, which shot in and around Bath this summer that he has secured a date for a local pre-release screening in January. The drama will be shown at Komedia Cinema on Sunday 19th January. Invitations will shortly be going out to Council colleagues and others connected to the filming.
- The LEP proposal for a **Shoot West Film Marketing Office**, with which Film Office has been involved since its early stages has now been approved and the first stage of its submission for funding has gone forward. This will also involve funding for improvements at the Bottle Yard film and tv studios in Henleaze.
- Film Office is also helping to set-up a new umbrella organisation **FO:UK (Film Offices: UK)**, a new England-wide association that will allow film offices to exchange best practice and to take part in joint ventures.
- **Hot off the press:** - Visit Britain are coming to film a promo in Bath this week because we've been voted No 1 Visitor destination on social media.

World Heritage Management

- **Great Spas of Europe**

The Council continues to keep an active interest in the 'Great Spas of Europe' project, led by the government of the Czech Republic. The project seeks to gain World Heritage status for an elite group of historic European spas, in order to recognise the contribution which spas have made to European and world culture. Whilst Bath is already a world heritage site, we want to be recognised as being within this elite group, primarily for tourism marketing purposes. In order to stay with the project and leave future options open, it was necessary for Bath to be included on the UK Tentative list of potential world heritage nominations. Competition for inclusion on the UK tentative list is extremely strong, and it is therefore tightly controlled by the UK Government.

We wrote to Minister Ed Vaizey, requesting his assistance in this matter, and worked closely with MP Don Foster and MEP Sir Graham Watson, who were both convinced of our case. We were delighted to receive a response from Minister Vaizey dated 24 October 2013 saying that it has been determined that it will be possible to include Bath on the current UK Tentative List.

The project is long-term and World Heritage recognition is by no means certain. However, the willingness of the UK Government to review their policy position and back Bath in this venture allows us to keep our rightful place at the top table of European Spas, and to continue to assess the benefits that staying with this project may bring.

- **World Heritage Site Management Plan**

The 2010-2016 World Heritage Site Management Plan is now at mid-term stage, and a progress report has recently been compiled for the Steering Group and for UNESCO. From a total of 71 actions in the plan, approximately half (48%) have already been achieved, with a further 39% underway. The most notable achievements have made by the World Heritage Enhancement Fund, which has turned £152, 000 of funding into over a £1m of work on the ground, across a total of 51 projects.

The recently appointed independent Steering Group Chairman, Peter Metcalfe, has undertaken a review of the workings of that group and is proposing a full report on World Heritage progress to the Council in Spring 2014.

This page is intentionally left blank

Agenda Item




British Transport Police

Chief Inspector Paul Richards
South West Sector Commander


Our history



We are one of the world's oldest police forces. We were the first to recruit female police officers, the first to use technology to assist in solving crimes and the first to use police dogs.


Crime history

We recall some of our most infamous cases.



Visit our rogues' gallery > Great Gold Robbery > Great Train Robbery >


Meet some notorious transport criminals of the past in our rogues' gallery. Four men committed an audacious gold robbery in 1855. The Great Train Robbery is one of the most infamous crimes of all time.



Murder of Sarah Hart > First railway murder > Murder of Isaac Gold > Murder of PC Byrnes >



Sarah Hart was murdered in Slough by John Tawell in 1845. The first railway murder was committed by Franz Muller. Train passenger Isaac Gold was murdered by Percy Lefroy in 1881. PC Byrnes was murdered by a rampaging group of men in 1885.

7/7 London bombings of 2005



On 7 July 2005, four suicide bombers struck London's transport network, killing 52 people and injuring over 770

2012 London Olympics

About us




- BTP cover England and Wales
- BTP Police officers 2,880
- BTP Police Community Support Officers 370
- 6 million people use the rail network **every day**

Our aim



- Helping to keep rail transport systems running
- Helping to make the railway safer and more secure
- Deliver value for money through continuous improvement
- Promoting confidence in use of the railway

Reducing crime is at the core of BTP's purpose and activities, and alongside reducing disruption, it has consistently been identified by stakeholders as a top priority for BTP

- Over the nine-year period to the end of 2012/13, BTP has reduced offences by 35%
- Reduced robbery down 80%
- Violence against the person down 7%
- Route crime down 71%
- **With a further 20% reduction of crime by 2019**

Our local BTP Neighbourhood Policing team



- Based in Bath Spa rail station
- 2 Police officers
- 6 Police Community Support Officers
- Street Marshals patrol and CCTV assist
- First Great Western is the main operator
- Over 5.9 million passengers last year - now ranked FGW seventh busiest rail station

Local area



How are we doing?

- BTP PACT meetings – next one 10 December 2013 (Royal Hotel Bath)
- All Officers trained to deal with sexual offences
- B&NES NPT annual ASB Delivery Plan
- Passenger Focus groups undertake surveys
- Advisory Networks within BTP
- Citizen Focused panels
- Local community and faith groups
- BTP and Community Safety operations

To date BTP has established an overall 43% reduction in reported crimes since 2009



Bath Spa Recorded Crime Figures			
Year	Offences Reported	Arrested/ Reported	Yearly % +/-
2009	221	126	-
2010	174	92	-22
2011	159	70	-9
2012	126	45	-21

BRITISH TRANSPORT POLICE

Safer station safer journey

The Neighbourhood Policing Newsletter
 Our Neighbourhood Policing Officers (NPOs) are based at Bath Spa, Bath, South Gloucestershire.

Page 1
 Team effort helps drive down crime at Bath Spa

Page 2
 Introducing the NPT's 'Alert' feature

Page 3
 NPT engages with community at Network Rail's 'No Mess' event

Page 4
 Revenue protection schemes succeed

Page 5
 Your Bath NPT contact details:
 Tel: 01757 934 8996
 email: mark.harris@btp.police.uk
 www.btp.police.uk

0800 40 50 40 or visit www.btp.police.uk

BE AWARE GUIDE TO THIEVES TACTICS

Level crossing safety

LOCK thieves out

BTP #Alert

follow us on Twitter @btp_uk

Support for Victims of crime

BRITISH TRANSPORT POLICE

BE AWARE GUIDE TO THEIR TACTICS

HOME PICKPOCKETS GADGET CRIMERS LUGGAGE THEFTS REPORT A THEFT

LUGGAGE THEFT TACTICS
 Protect your luggage from thieves by keeping bags with you whenever possible and checking regularly on stored bags at stops.

KEEP YOUR LUGGAGE SAFE

- Try to keep luggage close by and in view and check on your bags regularly.
- Remove valuables from your luggage before placing it in luggage racks or in overhead storage compartments.
- Don't leave valuable items unattended on a train when you visit the toilet or buffet car.
- If you are going to sleep on a train, do not leave valuables in view on the table or seat next to you. Keep them hidden.
- Ensure any bags placed on the floor are in front of you so that any movement of the bag will be noticeable.

CONTACT US
 To report an incident on the railway call 0800 40 50 40. In an emergency dial 999.

BRITISH TRANSPORT POLICE

We get the message

61016

- 'We get the message' text launch and campaign (March 2013)
- For the first time, passengers and the public can text us to report non-emergency incidents on the railway
- Our launch helped to publicise the new text service and advise people how to use it

Trespass and Cable Theft

- Trespass and vandalism cause millions of pounds worth of damage and puts lives in danger
- Cable theft and metal theft

Anti-Social Behaviour Order - ASBO

ASBO granted for 4 years – prohibited from

- Entering any railway station or railway premises within England and Wales without written permission from BTP
- Travelling or attempting to travel on any train in England and Wales without written permission from BTP
- Abusing, intimidating, assaulting or otherwise harassing any member of staff who is working or works upon any part of the railway system in England and Wales



February 2013

One drunk man (43 years) fooling around and lying on the rail track resulted in the cancellation of 54 trains costing the rail industry £56,000

WITH SAMARITANS



Managing suicidal contacts – bespoke training for:

- Street Pastors
- Volunteers
- Street Marshals
- Taxi Marshals





Thank you
Questions ?

paul.richards@btp.pnn.police.uk
www.btp.police.uk

Statement to B&NES Economic & Development Committee - 28 Nov 2013

Jenny Shruballs

[REDACTED]

[REDACTED]

Re:-Access & disabled parking for Keynsham Leisure Centre

I am a full time powered wheelchair user and use the Keynsham Leisure Centre Swimming pool for therapeutic reasons (pain control, maintaining movement and so on). I am completely dependent on my husband or various carers to drive me and take me out using a fully wheelchair accessible car, which has ramped access at the rear. I am also dependent on someone to support me when out, by helping manoeuvre/control my power wheelchair.

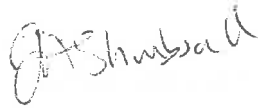
Parking and access to the Leisure Centre was always easy when we were allowed to park in designated disabled bays to the rear of the building, accessing straight onto pool side . However this facility was taken away in 2007 when access had to be through the front of the building and using a small and unreliable lift. Over the years this arrangement has caused difficulties for myself as well, I believe, for other disabled users of the Leisure Centre. With the current work being undertaken in Keynsham, the parking situation has become worse. There is only one disabled bay right by the Leisure Centre. This is not specifically for Leisure Centre users and may not be available. This disabled bay is too small for getting in and out of my car. It is also badly positioned - it requires me to cross an uneven, pot-holed road surface and negotiate an uneven, only partially dropped kerb in the face of oncoming traffic – to get to the front entrance. I believe the risk to me and other disabled users will get worse, with the multi-storey car park being re-opened and as the volume of traffic using this road, increases.

When going swimming, in my case, it is essential to take numerous items such as floats for support in the water, plenty of towels and cushions for my comfort when changing, as well as a special mug & tray for having a drink afterwards. Parking away from the Leisure centre involves my helper having to carry all these items as

well as having to help me with the wheelchair. So parking a distance away is not really suitable. Other disabled bays are positioned along Temple Street but are well beyond the Riverside Offices. This distance can prove difficult – even if such bays are available. Ordinary parking bays are seldom available or appropriate due to lack of size – I need at least 3 metres to the rear of my car to access in and out of the vehicle.

I trust that these comments on parking and access issues for the Leisure Centre will be taken notice of and addressed in the near future.

Thank you



Jenny Shrubsall

2

and to have to push a wheelchair
Long distances would cause a problem.
I very much support the team

who are trying to help disabled
people like my daughter in trying
to solve this problem. There must
be parking for disabled people
& access
much closer to the pool than at
present or disabled users will
lose an important part of vital
fitness in their lives

Yours sincerely

~~XXXXXXXXXX~~ Joyce Stork

19th Nov 2013

Dear Sir,
I am writing in regard to the
becoming disruption which is due to
take place near the Heyndam Leisure
Swimming Pool and lack of disabled
parking spaces.

I have a lead injured daughter
in a wheelchair whom I take
swimming twice weekly to help her
mobility. I am in my eighties

28.11.13.

Susan Charles. Chair Access BANES.

Disabled parking for Keynsham Leisure Centre

I have previously reported to you the difficulties and dangers regarding the lack of specified disabled parking for users of the Keynsham Leisure Centre, which was removed in 2007. With no suitable alternative being offered.

Thank you for listening to me before, but the depts. and relevant people you have referred me to, sometimes made an initial contact, go away to think about it, then do not answer or return my phone calls.

Since our last meeting in July the multi-storey car park between the Leisure Centre, and the Keynsham Regeneration new build was opened. Parking for nearly 100 cars.

Now all cars leaving the car park

have to follow the one way system out onto Temple Street.

Past the one marked dis. bay nearest the Leisure Centre. around a blind corner, lots of parked cars, often at speed.

If you are lucky enough to get that parking space, as it is open to all - not just for Leisure Centre users, the driver is on the narrow pavement side, too narrow to construct a manual wheel chair, and no dropped kerb.

A passenger needing to transfer to a wheelchair would be in the middle of the road - maybe a carer too.

There is less than 4 cm between the car and the pavement on the Leisure Centre side, no dropped kerb, although that was promised 2 years ago, oh and some pot holes to negotiate,

There are major works planned in
area

③

In the New Year, putting a new
god man the length of Temple St
and the High Street.

Passing will be disrupted for
approx. three months evidently.

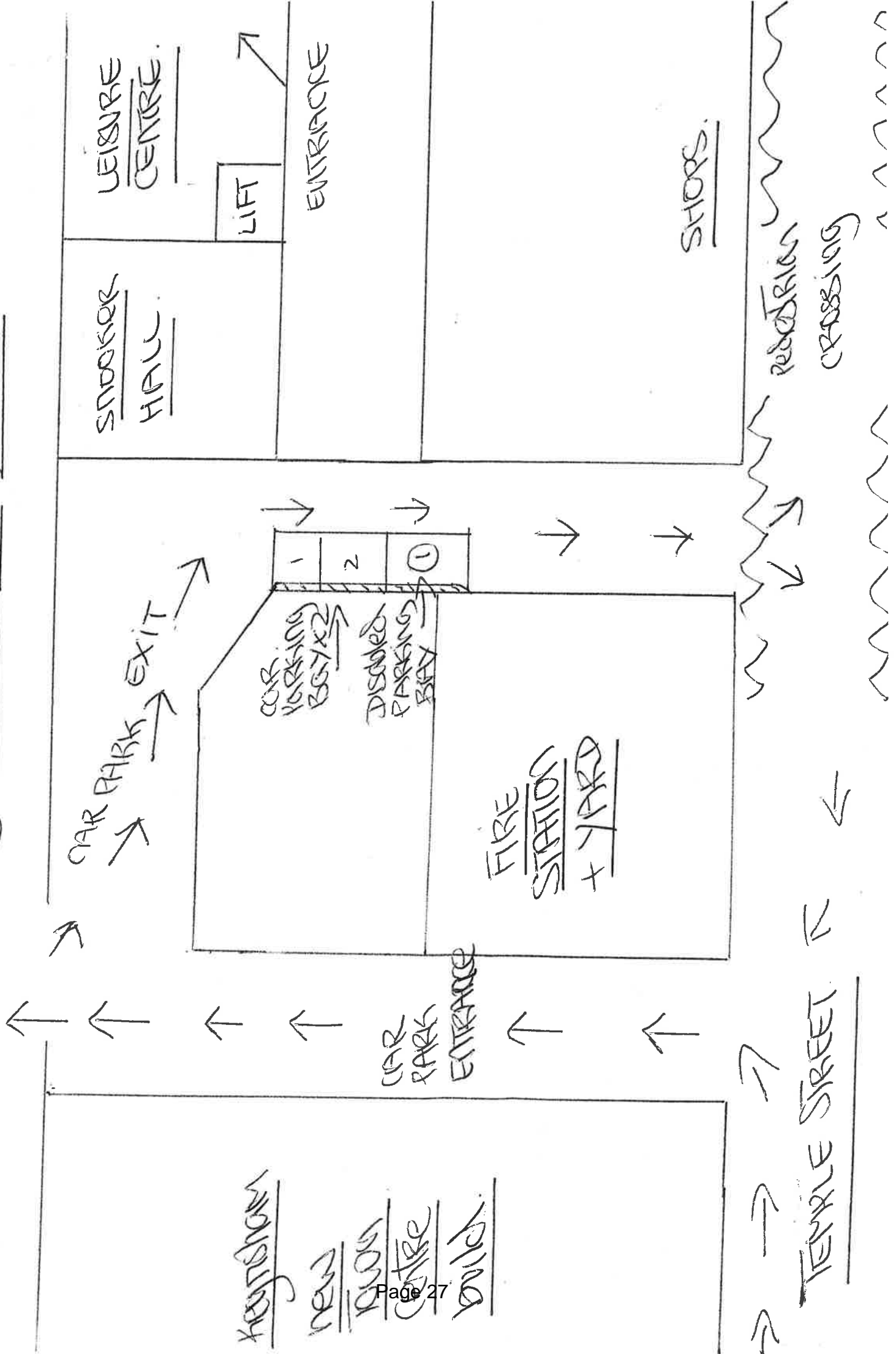
It is obvious that disabled
people have not been considered
during the planning of these
works, or the regeneration,

It is also obvious that BORO
do not want to encourage disabled
people into the LEISURE CENTRE.

Which is a shame, ~~that~~ once in,
there are, and friendly helpful
staff.

Please, what are you going to
do about this problem, before
there is a nasty accident, or
worse a fatality.

NEW MULTI STOREY CAR PARK KEYSBORO.



Agenda Item

Bath & North East
Somerset Council

Leisure Strategy 2013 – Update on progress

Bath and North East Somerset – *The place to live, work & visit*

Bath & North East
Somerset Council

Contents

- » Why Leisure?
- » Links to Health and Wellbeing
- » Initial work – Evidence Base for Built Facilities
- » Initial conclusions

Bath and North East Somerset – *The place to live, work & visit*

Bath & North East
Somerset Council

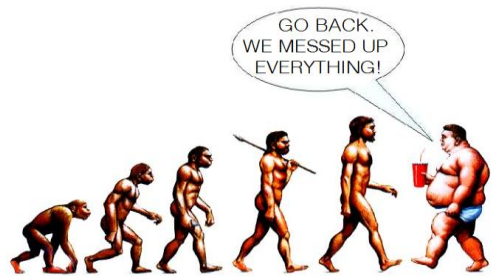
Vision for discussion

- » 'To get more people, more active, more often'
- » Aim:
 - » 'Reducing health inequalities and improving health and wellbeing in Bath and North East Somerset'

Bath and North East Somerset – *The place to live, work & visit*

Bath & North East
Somerset Council

Why Leisure?



Bath and North East Somerset – *The place to live, work & visit*

Bath & North East
Somerset Council

Health and Wellbeing Strategy



Bath and North East Somerset – *The place to live, work & visit*

Bath & North East
Somerset Council

Health and Wellbeing Initial Consultation

- » Good engagement with the sector, good understanding of the role leisure can play
- » Want to see how a leisure strategy delivers on the outcomes of the H&WB strategy and Public Health outcomes framework
- » This consultation has been used to inform some initial headings and outcomes for the strategy

Bath and North East Somerset – *The place to live, work & visit*

Health and Wellbeing Initial Consultation

- » Public Health Team
- » Clinical Commissioning Group (Operational Leadership Team)
- » Health and Wellbeing Board
- » People Directorate SMT
- » Cllrs Simon Allen and David Dixon

Bath and North East Somerset – The place to live, work & visit

Health and Wellbeing – Emerging Priorities

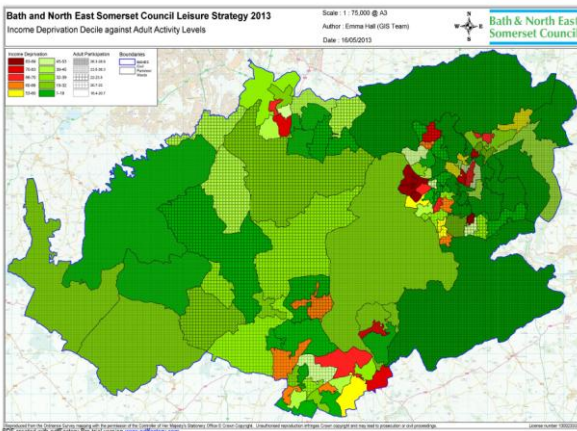
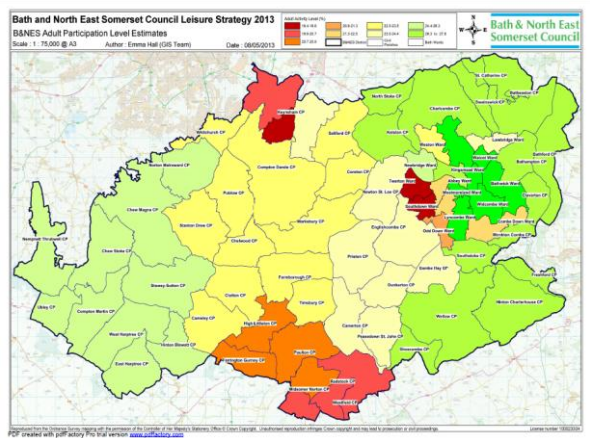
- » Targeted Health intervention schemes – P2H
- » Tackling obesity – including pre surgery weight loss
- » Improved health for middle aged men and older people
- » Increasing participation in active lifestyles – walking, cycling, swimming – cheap/free swimming initiatives for children
- » Managing long-term Conditions, ie pain management, diabetes, pulmonary, rheumatology, back pain, CHD
- » Family leisure opportunities
- » Providing education on healthy living
- » Outreach programmes
- » Reducing health inequalities

Bath and North East Somerset – The place to live, work & visit

The Strategy

- » Due to the time pressure of the impending procurement, the work on built facilities has been undertaken first
- » Approach taken is to gather evidence, understand supply and demand and then draw conclusions
- » This approach to be applied to remainder of strategy and potentially to draw together a number of strategies and work areas

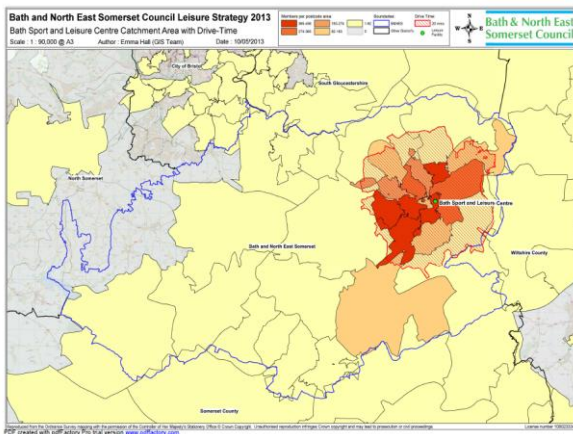
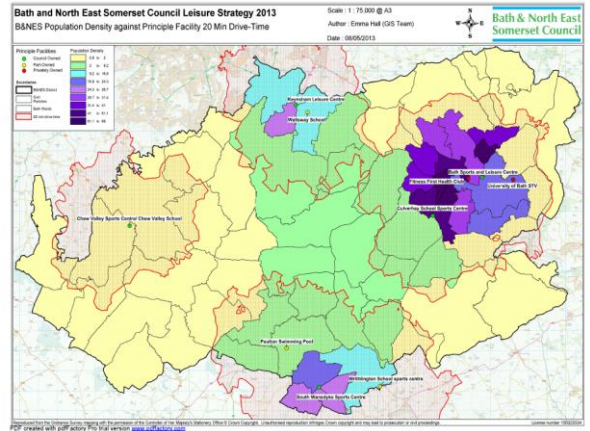
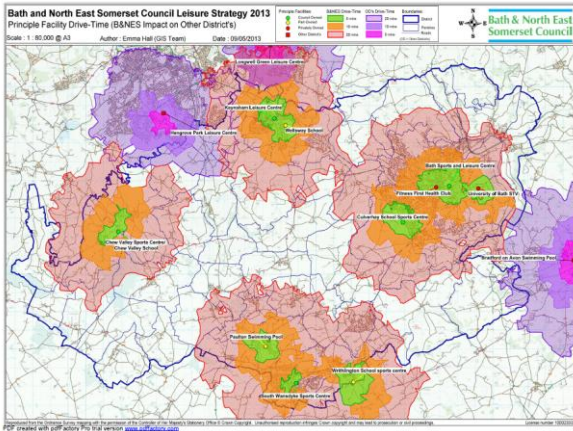
Bath and North East Somerset – The place to live, work & visit



Facilities

- » So what do we have in terms of facilities in B&NES?
- » There is a view that Bath has a lot of facilities, however many of them are outside the influence of the Council and do not provide open community access
- » A core of facilities provide the key community provision

Bath and North East Somerset – The place to live, work & visit



Bath & North East Somerset Council

Initial conclusions

- » The core facilities provide good geographical coverage
- » There is an oversupply of sports halls in Bath and Keynsham
- » Lack of swimming teaching space
- » Large latent demand for swimming, undersupply of teaching space – swimming lessons a key life skill and income driver
- » Under supply of fitness suites, large latent demand

Bath and North East Somerset – *The place to live, work & visit*

Bath & North East Somerset Council

Initial conclusions cont.



Bath and North East Somerset – *The place to live, work & visit*

Bath & North East Somerset Council

Initial Conclusions cont.



Bath and North East Somerset – *The place to live, work & visit*

Opportunities

- » Potential business case to replace Keynsham leisure centre with a new build facility
- » Remodel Bath Sports Centre to take advantage of commercial opportunities that are available
- » Increase size of fitness suite as South Wansdyke and increase studio space

Bath and North East Somerset – *The place to live, work & visit*

Opportunities cont.

- » By allowing aspects of the centres to be more commercially driven we can seek to support social and health objectives being delivered through the contract
- » Culverhay Sports Centre is well located to lead this work

Bath and North East Somerset – *The place to live, work & visit*

Feasibility

- » Work is progressing on outline feasibility to establish potential capital costs and resulting revenue positions
- » Additional commercial facilities being looked at to enhance affordability

Bath and North East Somerset – *The place to live, work & visit*

Feasibility cont.

- » The aims of feasibility work would be to seek to:
 - » Modernise the stock of facilities
 - » Step change in participation levels to deliver leisure strategy objectives
 - » Maximise income opportunities
 - » Enable the best possible deal through the new procurement process

Bath and North East Somerset – *The place to live, work & visit*

Procurement

- » This work will inform the procurement exercise which will start on December 2013
- » Include the recommendations in the specification to get a view from the market and to seek capital investment
- » To ensure that the importance of delivery against health outcomes is clear in specification
- » Evaluation process to include this is scoring mechanism

Bath and North East Somerset – *The place to live, work & visit*

Next Steps

Date	Action
December 2013	Draft Strategy as the basis for consultation and to start the procurement process
January 2014	Single member decision to consult on strategy and Issue OJEU notice to start procurement
January – February 2014	Consultation on draft strategy
March 2014	Strategy complete
March/April 2014	Cabinet sign off of strategy and next stages of the procurement process
September 2014	Decision on funding option(s) and sign off of shortlist of solutions
December 2014	Decision on preferred solution(s) and funding envelope funding

Bath and North East Somerset – *The place to live, work & visit*

Health and Wellbeing Strategy

Get Active Strategy (Leisure Strategy)
First Draft December 2013, review/update in
May 2014

Page 33

Active Design
Guidance
Apr 2014

Green Space
Strategy
Apr 2014

Playing Pitch
Strategy
Apr 2014

Built Facilities
Strategy
Dec 2013

Targeted Health &
W'being Schemes
Apr 2014

Community Development
/ Events
Apr 2014

Active Travel
Apr 2014

Agenda Item

Evidence base for CIL,
Placemaking Plan and reg
123 list

This page is intentionally left blank